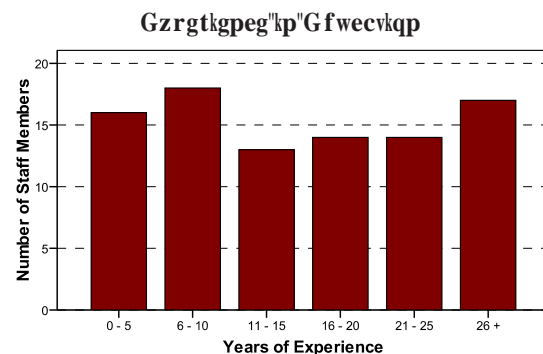
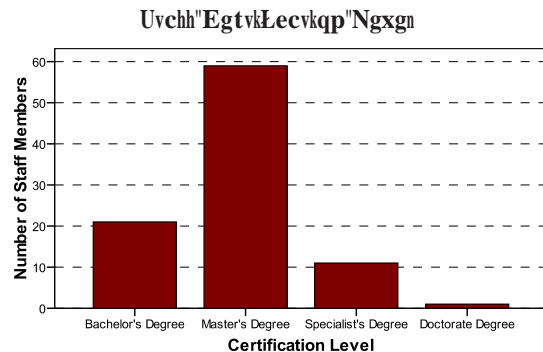


Camp Creek Elementary School

Other 2007-08 Highlights...

- † For the third year in a row, Camp Creek was recognized by the Governor's Office of Student Achievement at the Silver Level for the Highest Percentage of Students Meeting or Exceeding Standards.
- † For the third year, Principal **Kathy Jones** was named a High Performance Principal by Gov. Sonny Perdue.
- † Camp Creek students earned high marks for average daily attendance, with an average of 98% of students attending school daily. Camp Creek's attendance was #1 among all GCPS schools last year.
- † Camp Creek Elementary earned the Environmental Achievement Award for the sixth year in a row.
- † Camp Creek was named School by Gwinnett Clean & Beautiful for the school's efforts in recycling.
- † Camp Creek had the highest percentage (98%) of 5th grade students scoring in the Meets Standards and Exceeds Standards ranges on the Georgia Writing Assessment, compared to other Gwinnett elementary schools.
- † School staff members were hired to meet the needs of all students:
 - A math specialist, a science specialist, and a writing specialist provide additional support to teachers and students in those content areas.
 - Four intervention teachers provide support to students who are achieving below their grade level in the areas of math and reading.
 - Seventeen gifted-certified teachers provide support to gifted and high-achieving students.
- † Flexible grouping of students in grades 3-5 allow for more instructional time in the areas of math and reading.
- † Parent involvement through the Camp Creek Book Club, which is led by trained parents during student lunchtime.
- † Camp Creek provided student leadership opportunities through Student Council and Junior Beta Club.

2007-08 Staff Data



2004-2008 Student Data

	School Year			
	04-05	05-06	06-07	07-08
Enrollment	969	991	1,041	1,040
Black	20%	18%	18%	18%
Hispanic	13%	13%	15%	15%
ESOL	5%	5%	4%	5%
Gifted	0%	0%	0%	0%
Yield	57%	58%	56%	55%
Transfer	5%	5%	6%	7%
U.S. Birth	14%	14%	14%	13%
ESOL	3%	4%	4%	5%
Attendance	12%	13%	15%	16%
Average Attendance	98%	98%	98%	98%

School Safety Perceptions

Survey...
 95.3% of students agreed or strongly agreed that they felt safe at Camp Creek Elementary.
 96.8% of parents agreed or strongly agreed that their child's school was safe.

The mission of Gwinnett County Public Schools is to pursue excellence in academic knowledge, skills, and behavior for each student, resulting in measured improvement against local, national, and world-class standards.

Camp Creek Elementary School
 * 415-882-2100
 1100 Camp Creek School Dr.
 www.campcreekschool.com
 Kathy M. Jones, Principal

Gwinnett County Public Schools
 * 770-420-2000
 www.gwinnett.k12.ga.us
2008 Gwinnett County Board of Education
 4000 Peachtree Dunwoody Rd.
 5th Floor
 Atlanta, GA 30328
 Dr. Robert McClure; Dr. Mary Kay Murphy; and Louise Radloff
J. Alvin Wilbanks, CEO/Superintendent



Accountability Report

Results-Based Evaluation System

Issued 2008-09



Camp Creek Elementary School

Kathy M. Jones, Principal

Calvin Watts, Area Superintendent

Gwinnett County Public Schools (GCPS) has developed an accountability system for improving schools called the Results-Based Evaluation System (RBES). RBES fairly and systematically measures a school's progress, providing a process that clearly communicates expectations; reviews, monitors, and supports school performance; and evaluates that performance.

Camp Creek's school council and school leaders collaborated on the highlights included in this accountability report, which also serves as the school's annual report. The report provides consolidated information on the school's effectiveness, based on multiple measures and student characteristics. **Please review this report to learn more about the school's improvement efforts and progress.**

CONTENTS:

- Key Results on Improvement Plans
- 2007-08 Results:
 - GCPS Promotion Requirements... Grade 4 Gateway Grade 5 Writing Gateway
 - State Promotion Requirements... Grade 3 CRCT Grade 5 CRCT
 - CRCT and Adequate Yearly Progress
- 2007-08 Highlights
- Staff Data
- Student Data
- School Safety Perceptions

Key Results from 2007-08 Local School Plans for Improvement

Local School Plans for Improvement are plans developed locally by school administrators, teachers, and parent advisory groups. These plans outline school goals.

Goal: In reading, language arts, and mathematics, 99% of all students will achieve on or above grade level.

Results: Our standardized and local test data indicate continuing success for our students! In reading and language arts, 98% of all Camp Creek students achieved on or above grade level, with 62% exceeding expectations. In math, 95% of our students achieved on or above grade level, with 59% scoring in the Exceeds Standards range.

The use of Gwinnett County Public Schools Quality-Plus Teaching Strategies continues to help our students and teachers focus on teaching and learning! These research-based teaching techniques have been proven effective with all types of learners across grade levels and subject areas. At every grade level, intervention specialists worked with students who were achieving below grade level to increase achievement in reading and math. Gifted resource and gifted cluster teachers met the needs of high-achieving students through an alternate gifted model that emphasizes content areas. Also enhancing student achievement was high participation in our reading motivation program, Accelerated Reader, and the intervention technology program, SuccessMaker. Parent-led book clubs in every classroom provided additional reading opportunities. The Vocabulary Vertical Team for Parkview Cluster Schools (K-12) recommended and implemented practices for identifying essential vocabulary for improving achievement in all content areas.

Tell us what you think about your school's report!

Go to the "Accountability Report Feedback" section in the Quick Links menu at www.gwinnett.k12.ga.us and follow directions for participating in the survey.

Thank you!

